

# MSA00.1402L

COMPLESSO DI MONTESANT'ANGELO -Via Cinthia

Lavori di ripristino e/o sostituzione di alcune porte tagliafuoco nei comparti degli edifici MSA01-MSA02-MSA03-MSA05a-MSA06-MSA08a

## PROGETTO ESECUTIVO

responsabile  
del procedimento

geom. Antonio Candida

capo  
progetto

geom. Antonio Candida

coordinatore  
della sicurezza

Ing. Pasquale Musto

architettura

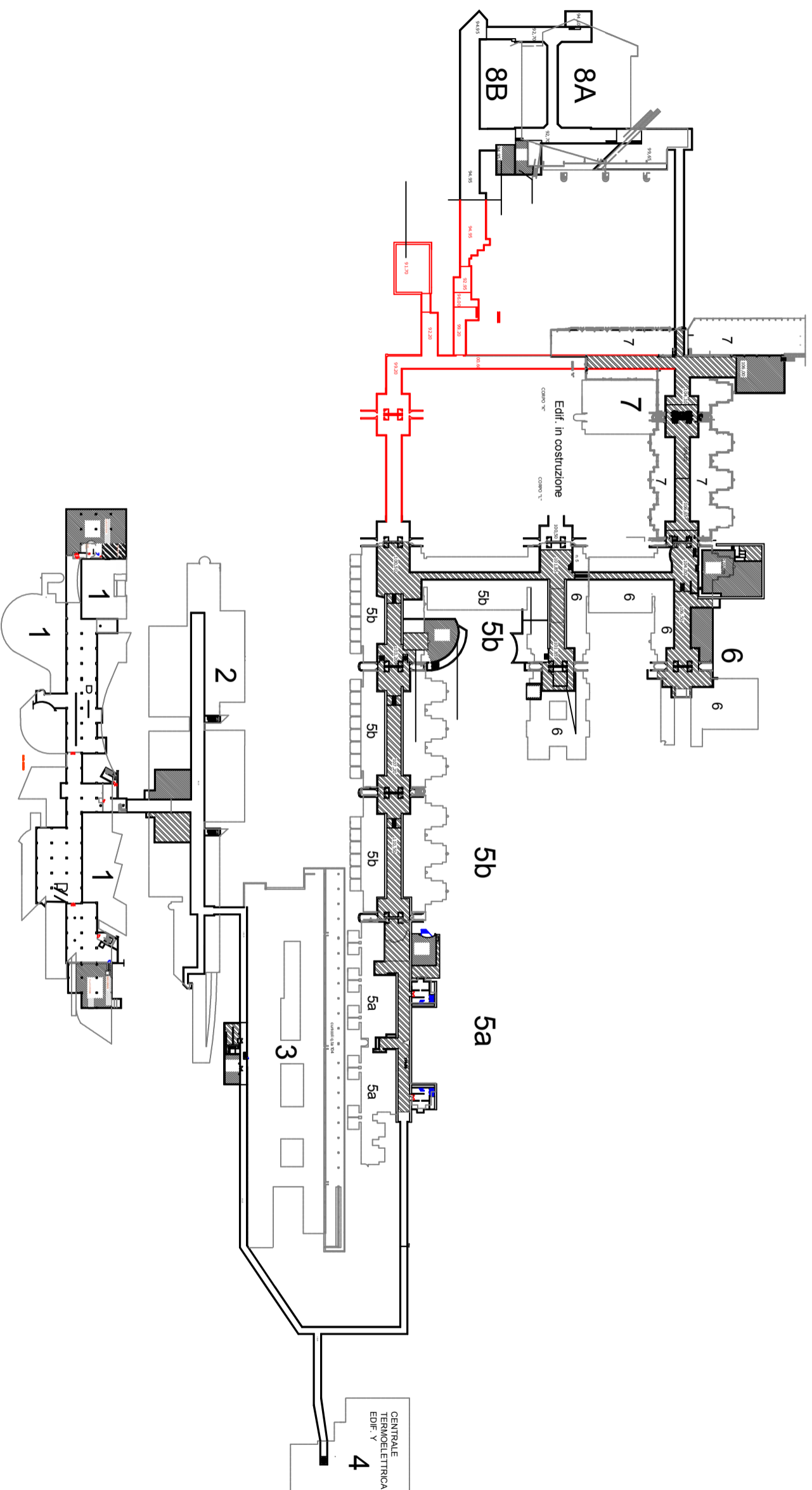
geom. Giuseppe Montesano

## Grafici di Progetto

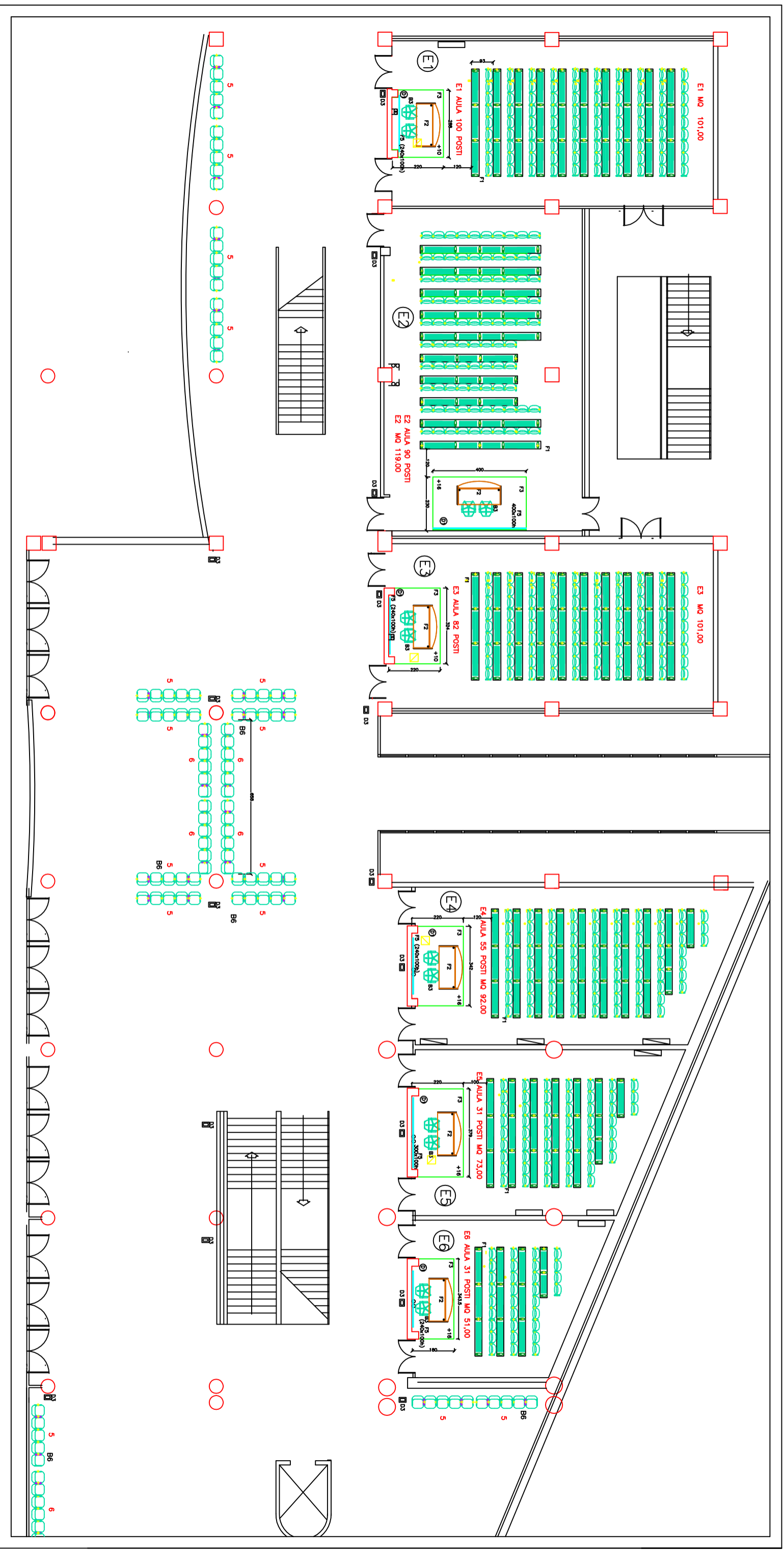
codice disciplina	n. elaborato/nom. specifica	stesura/revisione	redatto	approvato	scala
<b>EG</b>	<b>G</b>	<b>P1</b>			



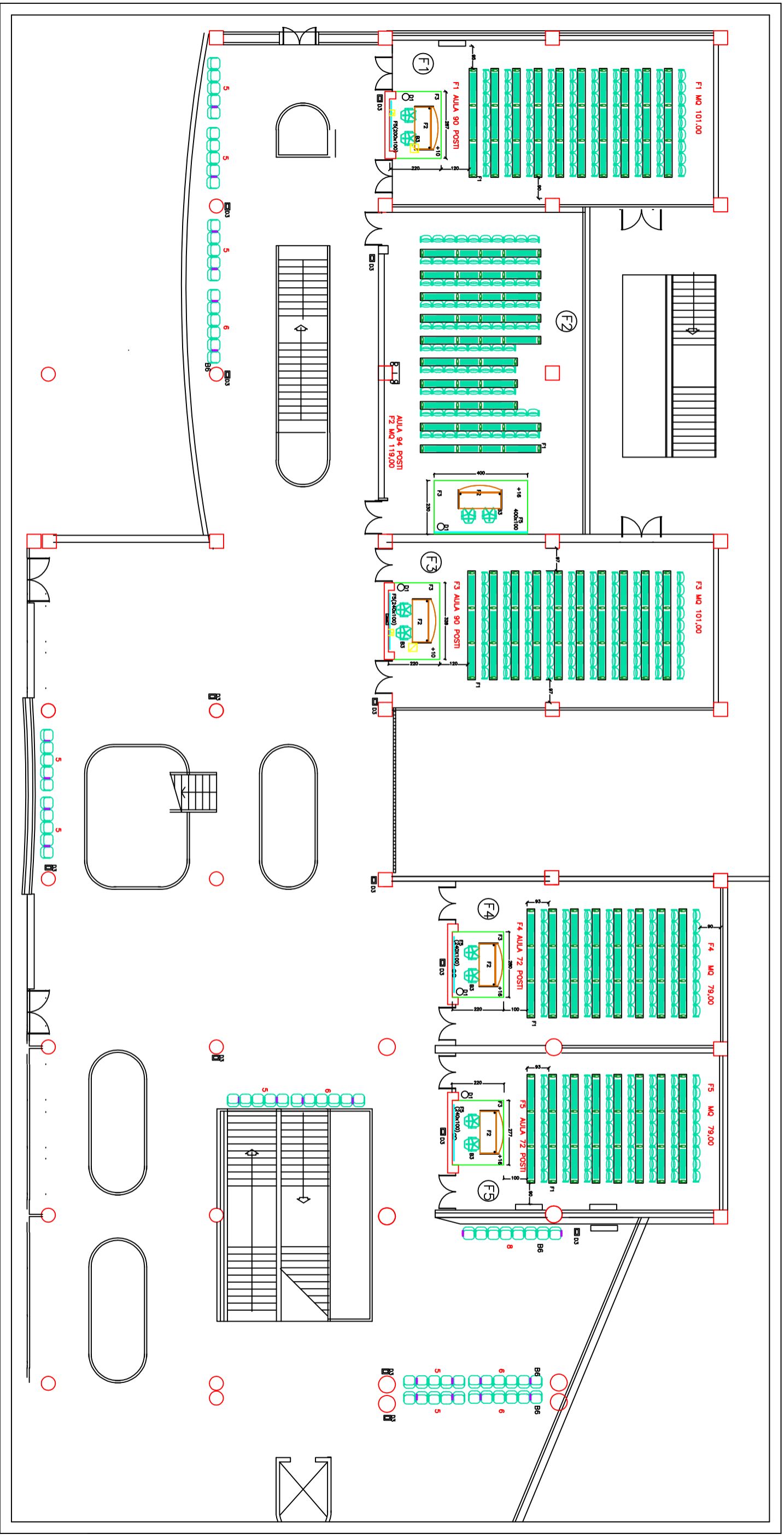
### CUNICOLI - MONTE S. ANGELO



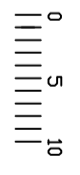
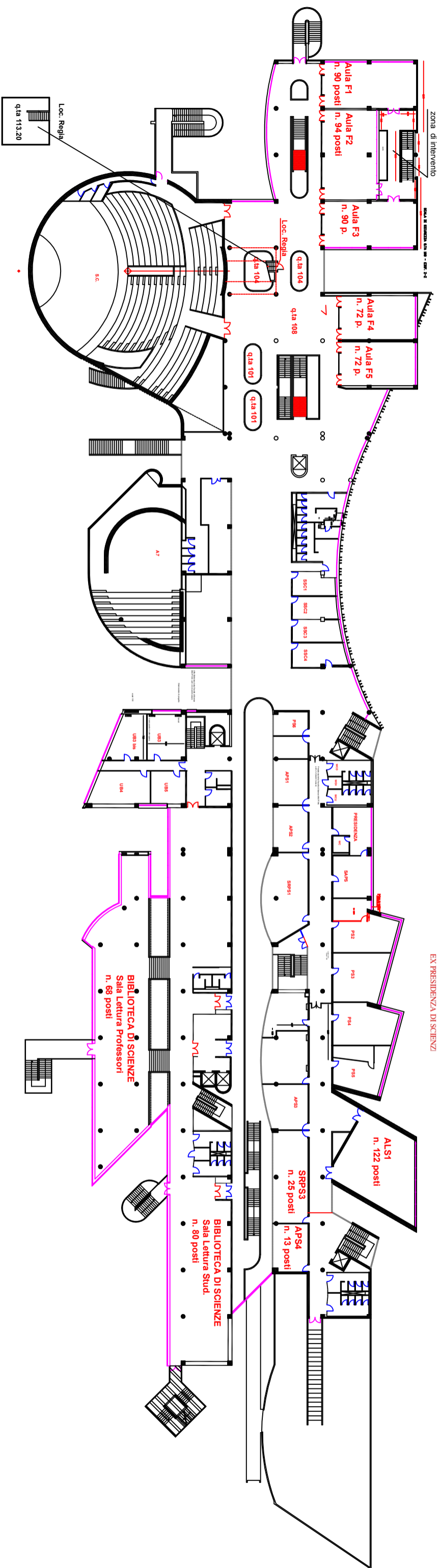
STRALCIO PIANTA EDIF. 1 Q.TA 104.50  
AULE E



STRALCIO PIANTA EDIF. 1 Q.TA 108.00  
AULE F



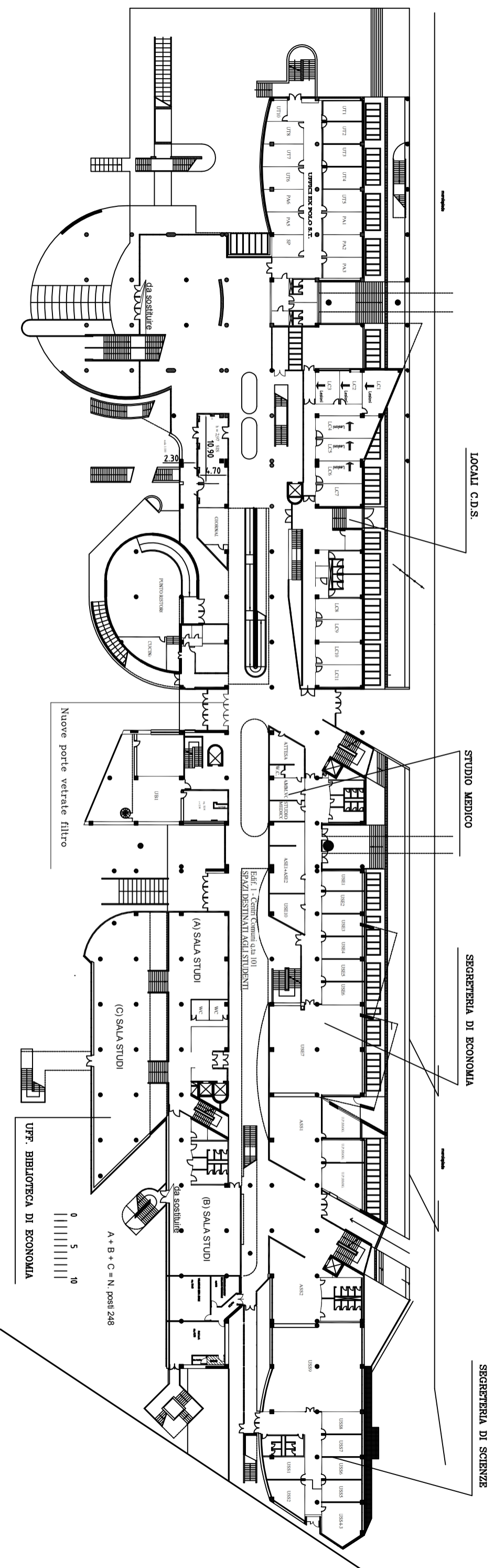
# EDIFICIO 1 - CENTRI COMUNI Livello 2" q.ta 108,00





# EDIFICIO 1 CENTRI COMUNI (ex-Z-Z')

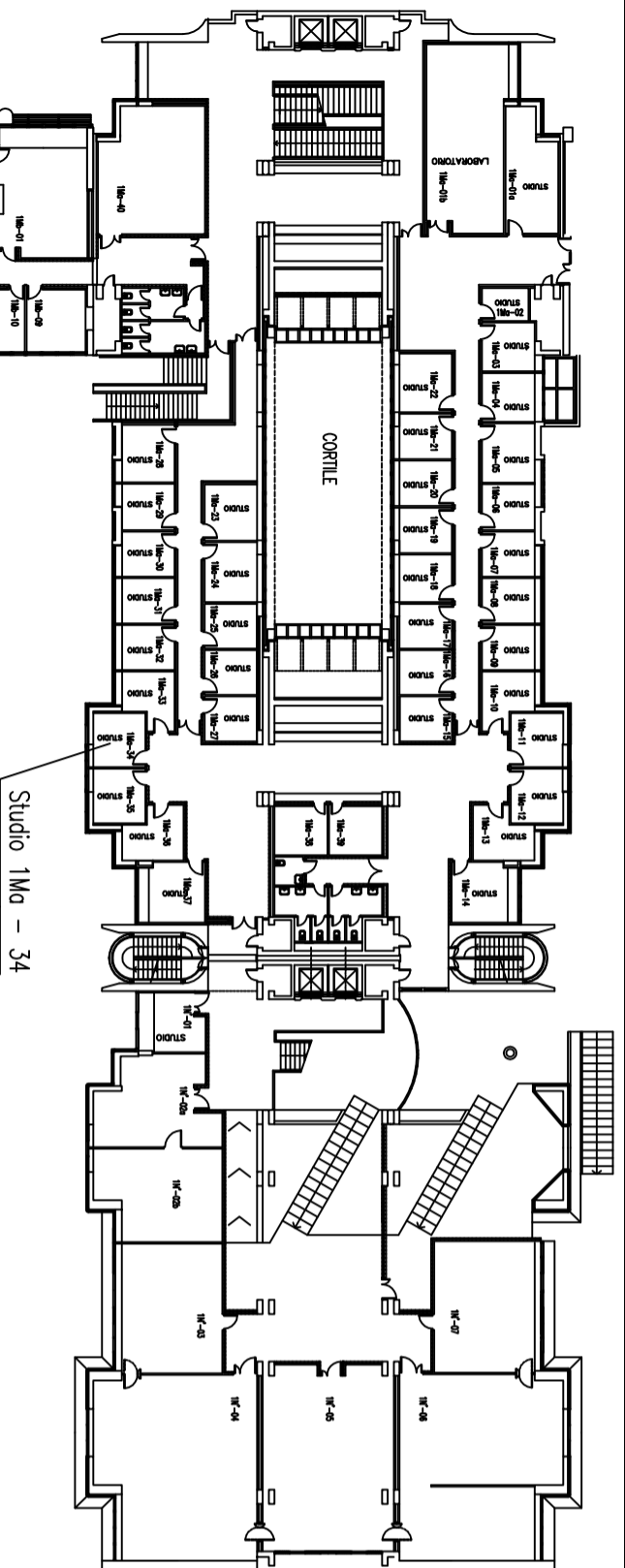
## Livello 0" q.ta 101



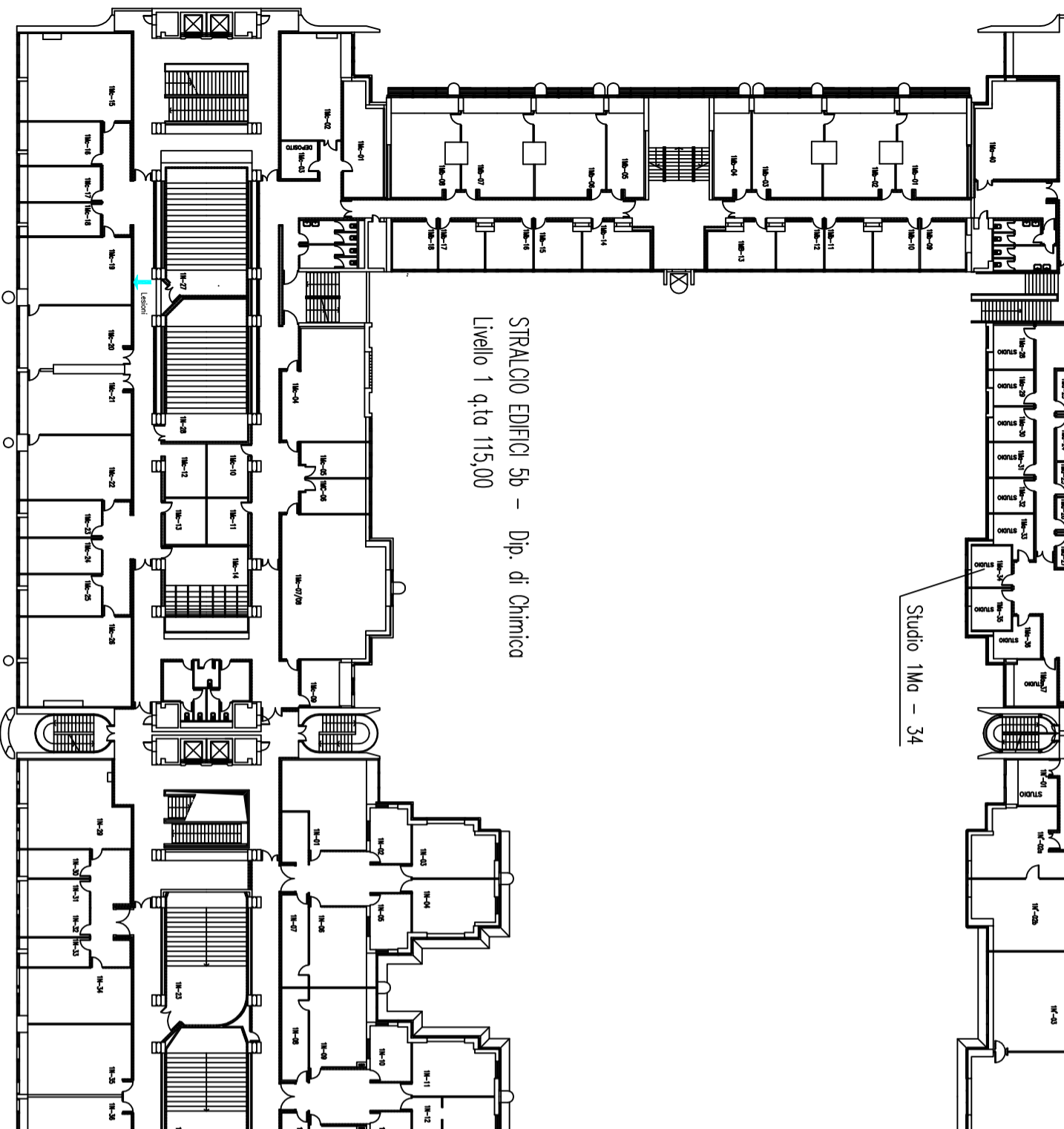




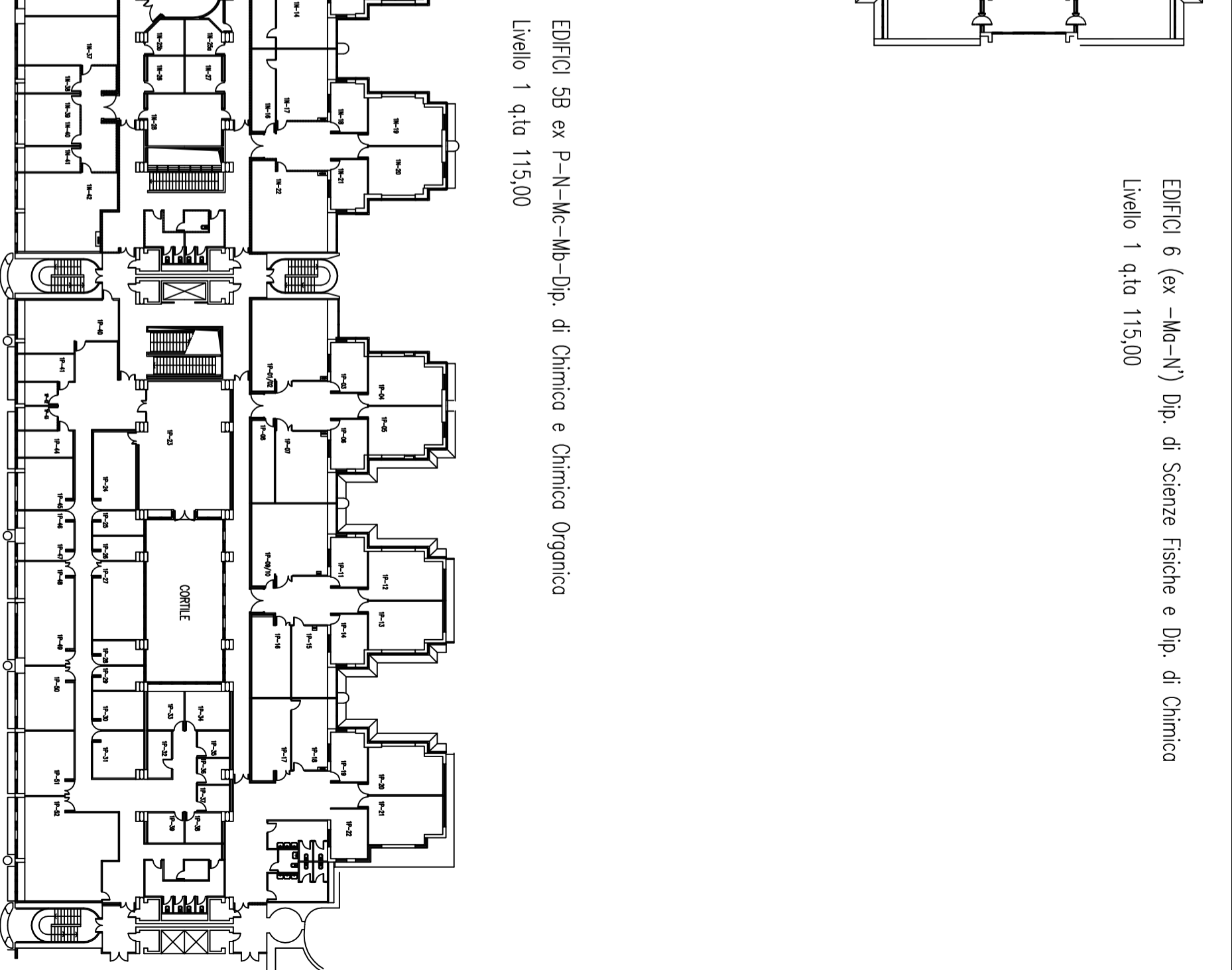




EDIFICIO 6 (ex -Ma-N') Dip. di Scienze Fisiche e Dip. di Chimica  
 Livello 1 q.ta 115,00



STRALCIO EDIFICIO 5b - Dip. di Chimica  
 Livello 1 q.ta 115,00



EDIFICIO 5B ex P-N-Mc-Mb-Dip. di Chimica e Chimica Organica  
 Livello 1 q.ta 115,00